



# ERGOPLACE

Workplace systems for better ergonomics.



# KANYA ERGOPLACE

KANYA ERGOPLACE offers efficient, ergonomic and tailor-made solutions for workplaces in industry and business. Optimised work processes and a corresponding infrastructure improve productivity. The ergonomic aspect is an important component of a workplace. Height-adjustable workbenches, optimal bench dimensions, lighting and individual tool positioning are just a few examples of a direct or indirect impact on the health, motivation and performance of the employees.

KANYA ERGOPLACE satisfies all conditions for an ergonomically oriented workplace system. Workplace systems are easy to assemble, are based on a modular design and can be extended flexibly.

The most important aspects for an ergonomic workplace are the following:

## ■ Workplace height

Height-adjustable for sitting or standing activities or for a change of employee.

## ■ Working surface

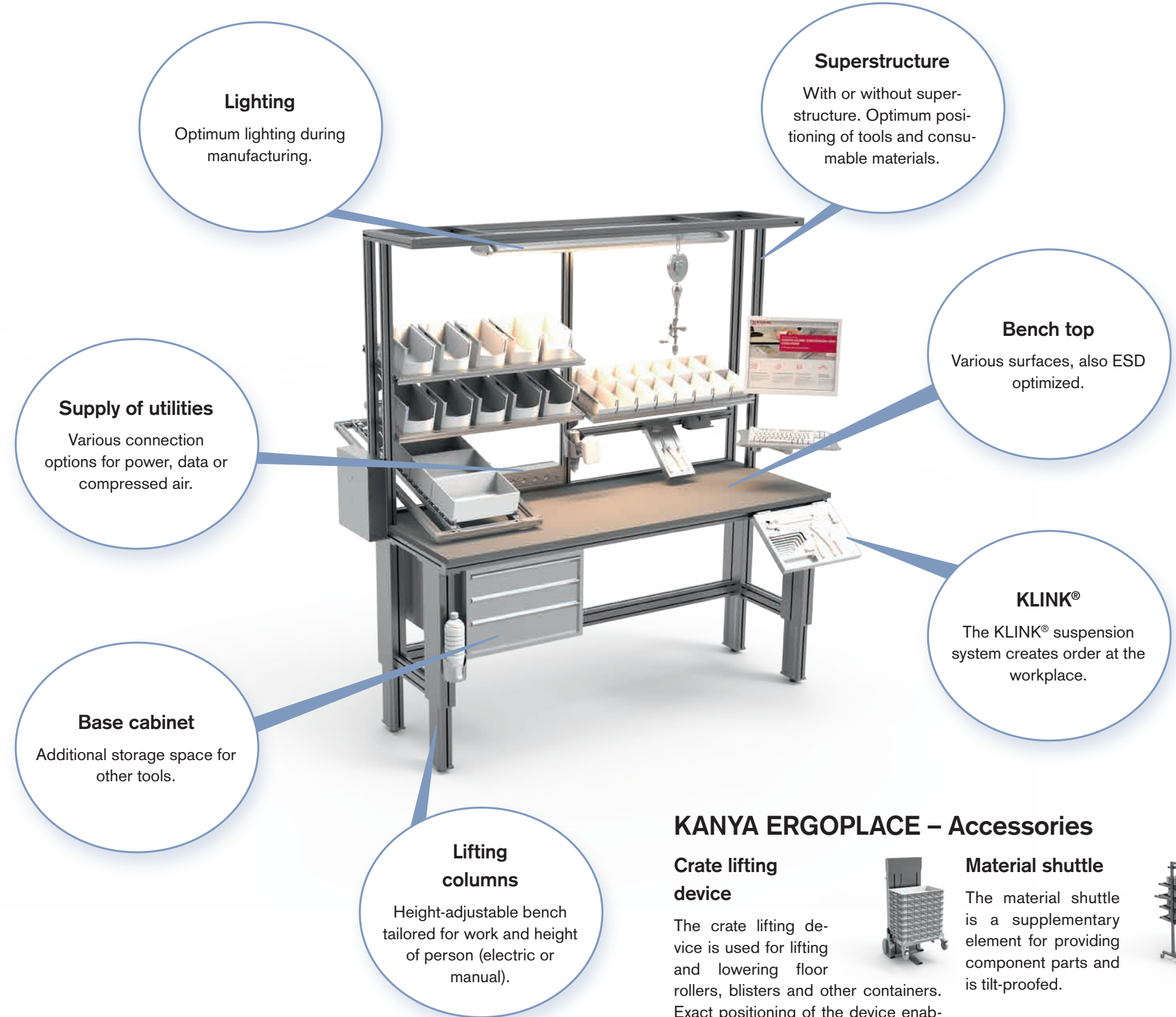
Different bench tops (wood, plastic, ESD optimized, etc.) in different dimensions for tools and component parts that are close at hand and at an optimal height, no additional physical exertion.

## ■ Lighting

Optimal brightness for well-being and performance and adjusted individually depending on the work procedure and requirements.

## KANYA System benefits

- ✓ Customized solution
- ✓ Ergonomically optimized
- ✓ Modular and flexible
- ✓ Simple installation
- ✓ «Industry 4.0» solution



## KANYA ERGOPLACE – Accessories

### Crate lifting device

The crate lifting device is used for lifting and lowering floor rollers, blisters and other containers. Exact positioning of the device enables ergonomic working.



### Material shuttle

The material shuttle is a supplementary element for providing component parts and is tilt-proofed.



# KANYA ERGOPLACE – Your solution for workplace systems

## Workplace system 1

Simple workplace system with a fixed setting or height adjustable with lifting columns (electric or manual).



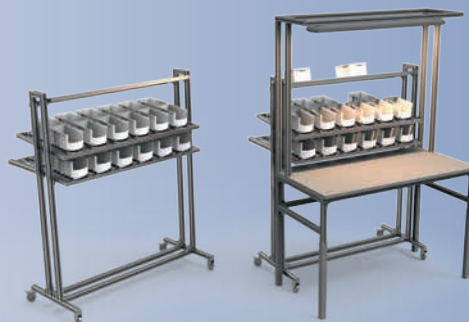
## Workplace system 2

Workplace system with super-structure and integrated lighting.



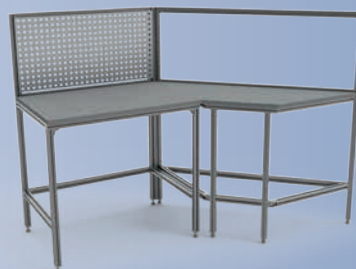
## Workplace system 3

Workplace system with super-structure and additional integrated material shuttle.



## Workplace system 4

Simple workplace system with corner workbench.



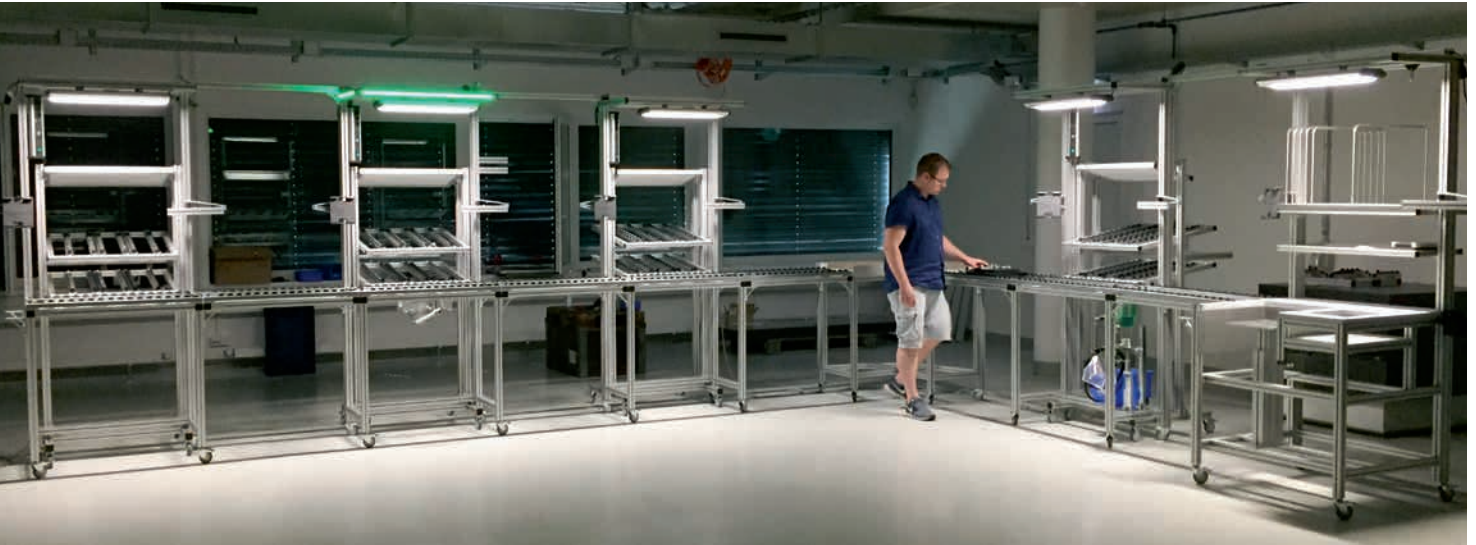
These workplace systems are a possible option for your solution.  
We will be pleased to advise you about working out individual solutions.



# KANYA assembly lines

Numerous solutions can be developed in assembly and production lines with the flexible, modular constructed KANYA system and interlinked work-places. With our specialized know-

how, we develop the desired solution, from simple to complex and automated assembly lines.



## KANYA Customer service

### KANYA Know-how

Many years of experience in technical consulting and engineering are integrated into our customers' projects. We support you from project planning through to final acceptance. We develop the desired solution in close co-operation and are only then satisfied when you are satisfied.

### KANYA product training

We will be pleased to offer interested KANYA customers free product training. In a one-day course you will be immersed in the world of KANYA aluminium profiles. You will get an overview of our range of profiles, of our connection technologies and the various application sectors. After this, you have the possibility of putting theory into practice and trying out sawing, connecting and assembling.

# SIMPLE. INGENIOUS.

WORKPLACE SYSTEMS FOR BETTER ERGONOMICS.

## Headquarter

KANYA AG  
Neuhofstrasse 9  
CH-8630 Rüti  
Schweiz  
Tel. +41 (0)55 251 58 58  
Fax +41 (0)55 251 58 68  
info@kanya.ch  
www.kanya.com

## Branch office

KANYA China Ltd.  
32 Hongxi Road, Suzhou  
Jiangsu 215151  
China  
Tel. +86 (0) 512 65360065  
Fax +86 (0) 512 65360906  
info@kanya.com.cn  
www.kanya.com

## Representatives

- A** Vektor Sicherheitssysteme und Automatisierung  
www.vektor.at
- B** M.A.M. Industrie S.A.  
www.mamindustrie.com
- BR** ABG Indústria e Comércio Ltda.  
www.abg.ind.br
- cz/sk** Visimpex a.s.  
www.kanya.cz
- D** August Dreckshage GmbH & Co. KG  
PLZ 1, 2, 3, 4, 5  
www.dreckshage.de
- D** KANYA Deutschland GmbH  
PLZ 0, 35, 54-56, 6, 7, 8, 9  
www.kanya-deutschland.de
- DK** JJ Mechatronic A/S  
www.jjas.dk
- F** Bernay Automation SA  
www.bernay-automation.com
- GB** Thinking Space Systems LTD  
www.kanya-uk.co.uk
- I** Meccania S.R.L.  
www.meccania.com
- IL** Conlog LTD  
www.conlog.co.il
- J** MIWA CO. LTD  
www.miwa-inc.co.jp
- NL** TEVEL Techniek bv  
www.tevel.nl
- PL** TABAL Sp. J.  
www.tabal.pl
- PL** JORDAN matcon Sp. z.o.o.  
www.jordan-matcon.pl
- RC** KANYA China Ltd.  
www.kanya.com/cn
- RC** Chongqing Holje Precision Machinery Co. Ltd
- RO** ARDACO TEHNIC METAL  
www.kanya.ro
- RU** Servotechnica  
www.servotechnica.ru
- S** EIE Maskin AB  
www.eie.se
- TN** HR-Engineering Sarl  
www.hrengineering-tn.com
- USA** A-Line Corporation  
www.aline1.com