

 **KLINX**[®]

The suspension console for maximum flexibility

Why KLINK

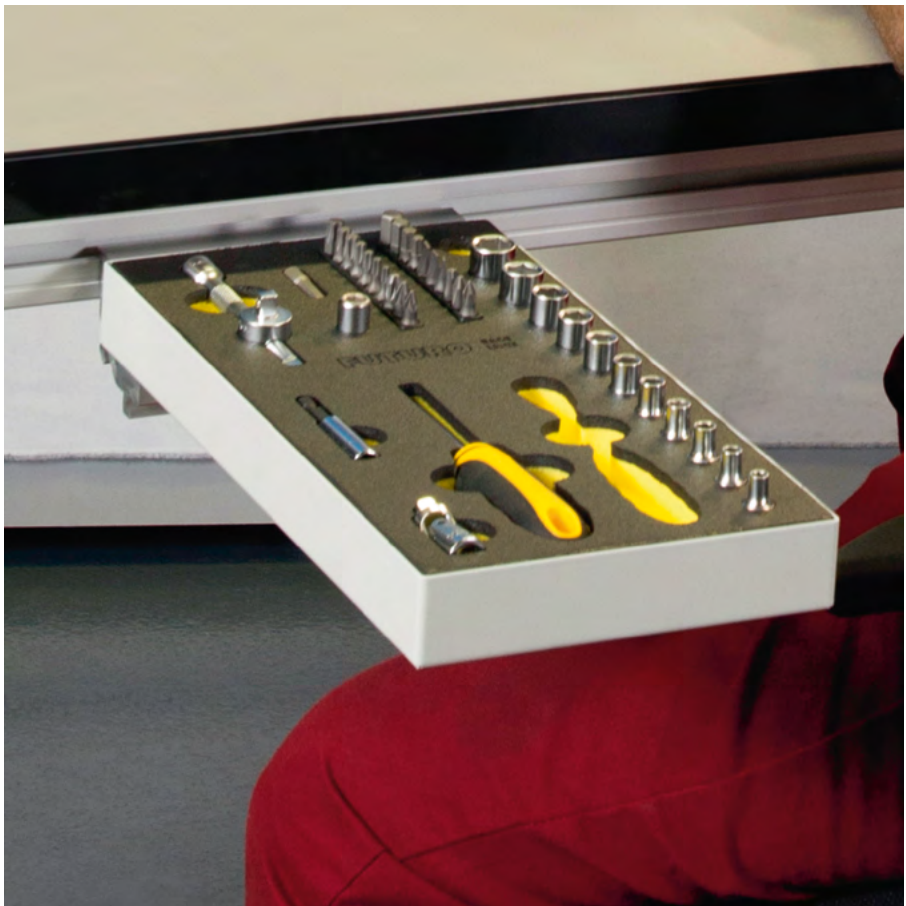
Initial situation

- Are your employees often preoccupied with looking for tools, measuring devices or other things in production or in the warehouse?
- Are tools, writing materials and measuring devices strewn across their assembly workstation?

Chaos and workstation blindness due to entrenched processes and workflows are commonplace. Have you ever wondered

how it is possible to achieve high quality and quantitative performance in this disorderliness?

Disorder and chaos lead to time wasted looking and moving around, which means downtime and higher costs. Furthermore, this disorderliness also affects employee motivation as well as customer satisfaction. Do your employees and colleagues work efficiently in the status quo, or is there potential for improvement?



The solution

The flexible and modular KANYA KLINK system, which can be used anywhere, makes it easier to maintain order, an overview, and thus increase productivity.

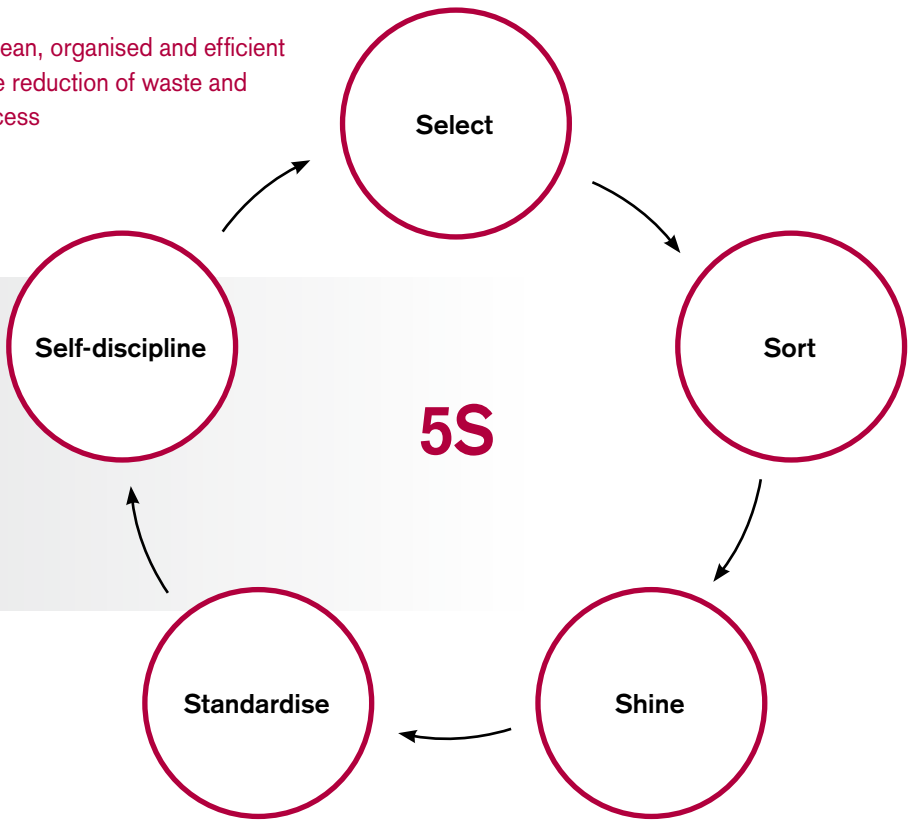
KANYA KLINK consoles can be individually adapted for a specific task or for a production environment. Each KLINK console can be placed at a variety of angles and in any combination wherever it is needed. Just clip it in and get to work.

Thanks to KLINK, the right tools for each process are precisely where they are needed. With KLINK, available work spaces and rooms can be individually, flexibly and optimally used.

Use

5S, a 5-stage approach to maintain a neat, clean, organised and efficient workstation. But also the starting point for the reduction of waste and thus part of the continuous improvement process (CIP).

- Standardised work
- Find rather than search
- What's important in the right place
- View of what's missing
- Clear method
- Qualitative work
- For all business areas



We would be happy to help you implement it on-site.

Order, cleanliness and visualisation help to...

Efficiency

- ... recognise waste
- ... improve use of space

Quality

- ... produce quality
- ... recognise and prevent quality risks at an early stage

Safety

- ... prevent work-related accidents
- ... reproducibility of processes

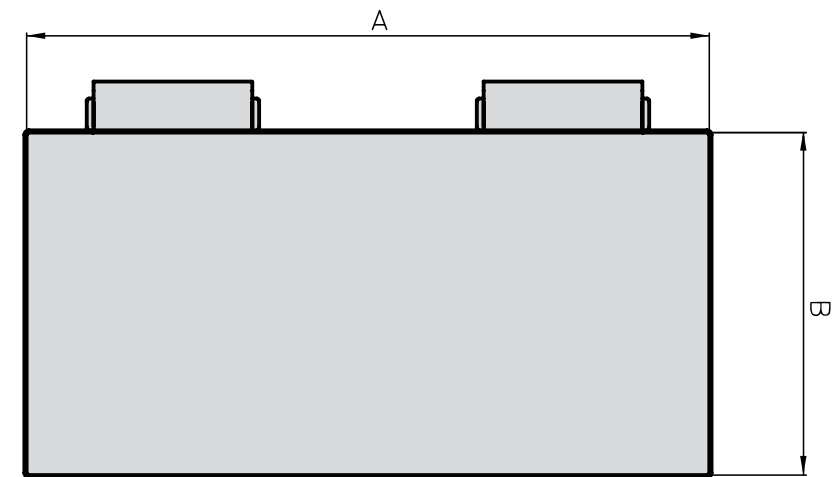
Customers

- ... leave a good impression
- ... win over customers

Employees

- ... more pleasant, comfortable workstation (ergonomics)
- ... overview of all workstations

KLINK consoles 0/45/90°



Application

The KLINK consoles are available in a variety of sizes as a standard and have fully assembled suspension extrusions. Their robust manufacturing makes it possible to use the console as a safe place to store tools and small parts, as well as an organisational aid for papers and other items.

Suspension extrusions and steel plates are available in two version. Either with an inclination angle of 0/40/80° or 0/45/90°.

Execution

1 mm
RAL 7035 powder-coated steel plate

Delivery contents (fully assembled)

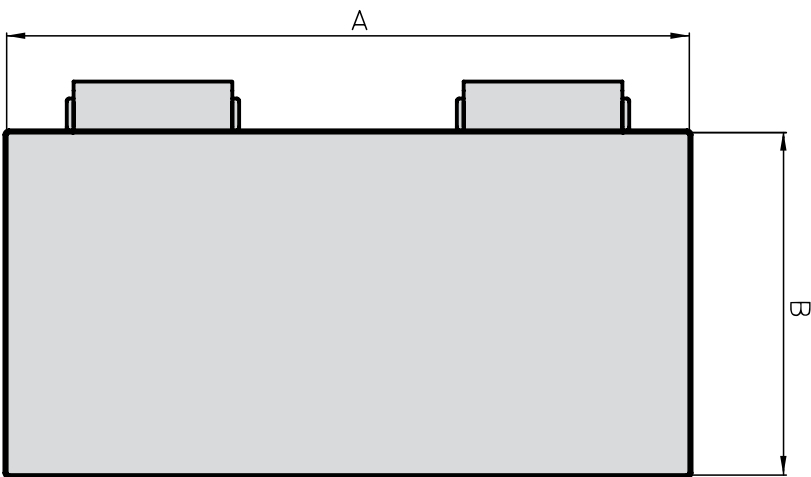
Suspension extrusion 0/45/90°
Shelf made of 1 mm steel
mounting screws



Ordering information			Order number
Shelves made of steel plate with suspension extrusion 0/45/90°			
A	B	Carrying capacity	
300 mm	150 mm	10 kg	S03-001-01
150 mm	300 mm	8 kg	S03-001-02
300 mm	300 mm	8 kg	S03-001-03
450 mm	300 mm	8 kg	S03-001-04
300 mm	450 mm	5 kg	S03-001-05
450 mm	450 mm	5 kg	S03-001-06

Other dimensions and load values available on request.

0/40/80° KLINK consoles



Application

The KLINK consoles are also available with an additional selection of suspension angles for unlimited application possibilities. At the customer's request, the KLINK consoles can be adapted to any size and dimension (maximum load 10 kg).

Execution

1 mm
RAL 7035 powder-coated steel plate

Delivery contents (fully assembled)

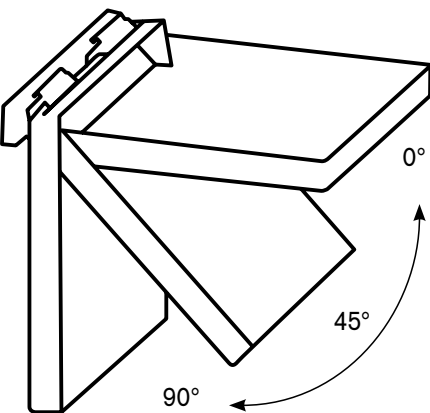
0/40/80° suspension extrusion
Shelf made of 1 mm steel
mounting screws



Ordering information			Order number
Shelves made of steel plate with 0/40/80° suspension extrusion			
A	B	Carrying capacity	
300 mm	150 mm	10 kg	S03-001-11
150 mm	300 mm	8 kg	S03-001-12
300 mm	300 mm	8 kg	S03-001-13
450 mm	300 mm	8 kg	S03-001-14
300 mm	450 mm	5 kg	S03-001-15
450 mm	450 mm	5 kg	S03-001-16

Other dimensions and load values available on request.

KLINK suspension extrusion 0/45/90°



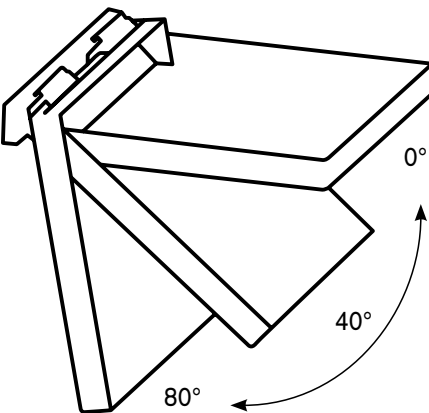
Delivery contents

KLINK suspension extrusion 0/45/90°, 76 mm:
2 KLINK extrusions 0/45/90°
4 covering caps
4 threaded plates with M6

KLINK suspension extrusion 0/45/90°, 148 mm:
1 KLINK extrusion 0/45/90°
2 covering caps
4 threaded plates with M6

Ordering information	Order number
KLINK suspension extrusion 0/45/90° 76 mm	S03-001-30-001
KLINK suspension extrusion 0/45/90° 148 mm	S03-001-30-002
KLINK suspension extrusion 0/45/90° cut to length	S03-001-30-099
Covering caps	C40-19

KLINK suspension extrusion 0/40/80°



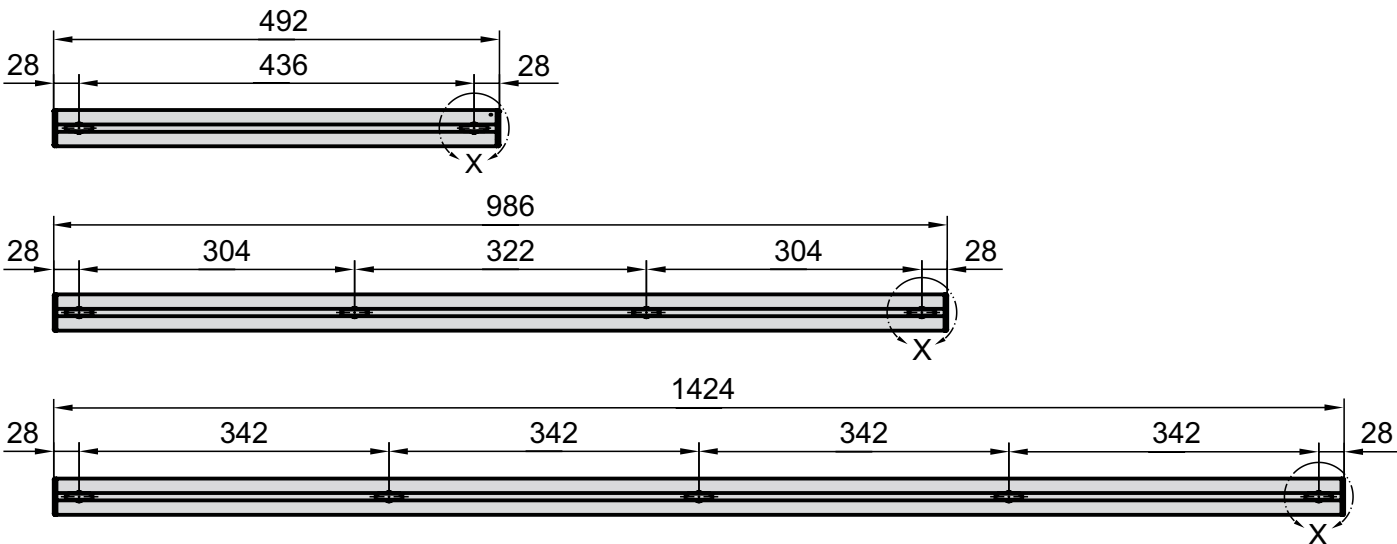
Delivery contents

KLINK suspension extrusion 0/40/80°, 76 mm:
2 KLINK extrusions 0/40/80°
4 covering caps
4 threaded plates with M6

KLINK suspension extrusion 0/40/80°, 148 mm:
1 KLINK extrusion 0/40/80°
2 covering caps
4 threaded plates with M6

Ordering information	Order number
KLINK suspension extrusion 0/40/80° 76 mm	S03-001-40-001
KLINK suspension extrusion 0/40/80° 148 mm	S03-001-40-002
KLINK suspension extrusion 0/40/80° cut to length	S03-001-40-099
Covering caps	C40-29-L C40-29-R

KLINK suspension rail

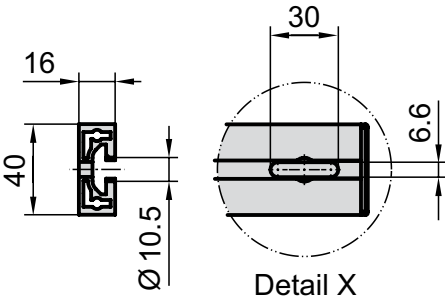
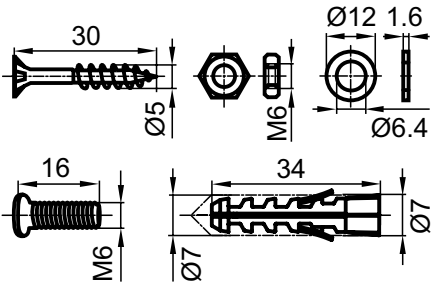


Application

If there isn't already a KANYA extrusion available, such as on a wall or a machine, the KLINK suspension rail provides the perfect solution for the KLINK system. The mounting holes make it possible to install the rails wherever the KLINK consoles will be used. The rail has lateral covers and comes with mounting materials.

Delivery contents

Per hole:
1x M6x16 extra low hexagon socket
1x U washer for M6
1x M6 nut
1x wood screw 5x30
1x nylon plug 7x34
2x covering caps C40-81

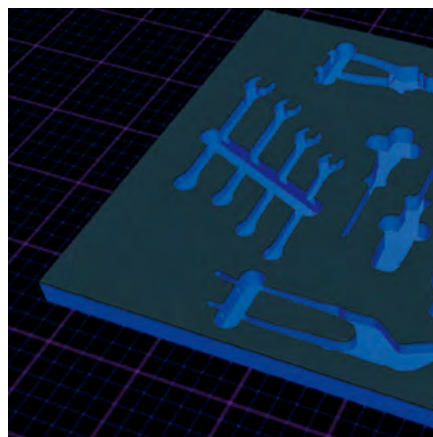
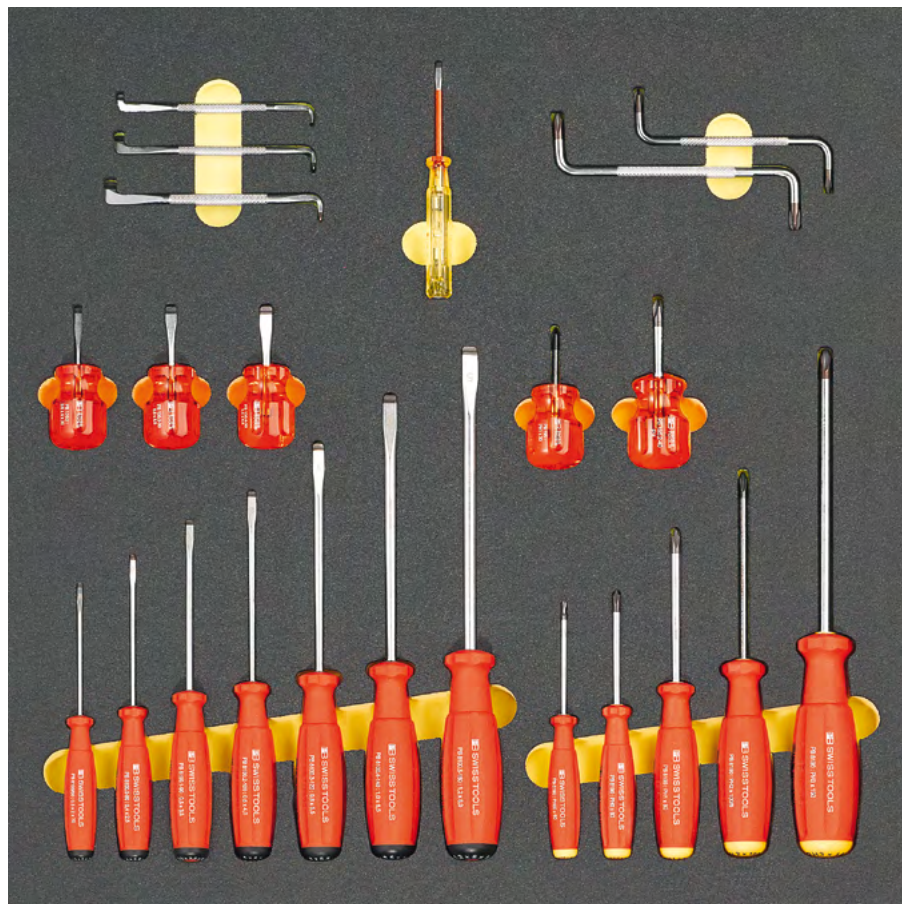


Ordering information	Order number
Flat suspension rail length 500 mm	S03-001-50-010
Flat suspension rail length 1000 mm	S03-001-50-020
Flat suspension rail length 1500 mm	S03-001-50-030
Flat suspension rail without holes cut to length	S03-001-50-099
Covering caps	C40-81

Shadowboards

Put an end to cluttered workstations! Now you can cleanly, ergonomically and clearly organise your tools and work pieces. This will help you work more efficiently at your workstation.

The shadow boards will be produced according to your individual requirements. The tailor-made solution is quick and cost-effective to implement. For instance, as a tool insert, commissioning panel, assembly aid, or packaging. The boards will help you keep your workstation more organised and clean. They optimise work processes and production times, also by reducing unproductive time spent searching.



Easy to implement

Your tools will be arranged as you wish on the scanning unit. The calibrated camera takes a photograph. The board design is completed, recessed grips / shapes and any text are added and the approval drawing is created.

After you give your approval, the finished board design is immediately produced on the milling machine and laser station.

The manufacturing process allows you to:

- arrange the parts in a flexible manner,
- add recessed grips and texts / pictographs / logos as well as
- choose different colours and materials.

Tool inserts for drawers

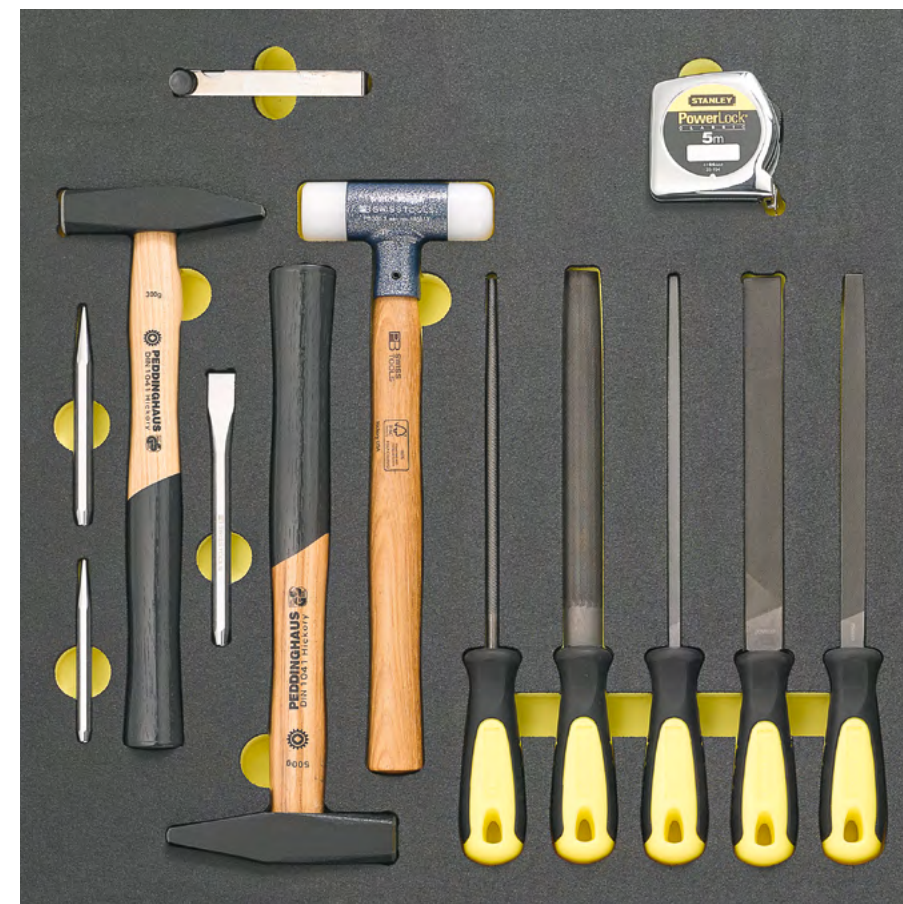
The shadow boards allow you to design your own foam inserts for tool cabinets and carts or your workstation. You are not bound to standard tool templates and can even integrate special tools.

Inserts for work pieces

Foam inserts made of flexible foam are also suitable for organising and partially protecting your work pieces.

Shadow board designer

The shadow board designer is a software solution that allows you to quickly and easily design customised foam inserts.



KLINK transport trolley



Application

Thanks to the flexible KANYA modular system, the KLINK transport trolley can be created in any dimensions the customer may want. The KLINK transport trolley provides the ideal conditions for an organised, tidy and optimised work environment.



Simply unhook it, take it with you, and clip it on your new workstation.



KLINK makes it possible to optimally adapt your workbench to your needs.

Ordering information

The transport trolley is manufactured in accordance with the sizes of the KLINK consoles and to customer specifications.

Internationally registered trademarks:



Certificate of Approval:

SN EN ISO 9001

Indications

Patent
This catalogue contains products that are subject to international patent rights. Any imitation of such products constitutes a violation of the law and involves compensation for damages.

Product liability
KANYA's product liability is subject to Swiss substantive law only. KANYA is not liable for any further claims and in particular denies liability for copied products or own application of our products by the user.

May only reproduced in whole or in part with the permission of KANYA AG, Switzerland. The right to make technical modifications is reserved.

©by KANYA AG [12/2017 – 500]

SIMPLY. INGENIOUS.

CLIP IN. GET ORGANIZED.

Headquater

KANYA AG
Neuhofstrasse 9
CH-8630 Rüti
Schweiz
Tel. +41 (0)55 251 58 58
Fax +41 (0)55 251 58 68
info@kanya.ch
www.kanya.com

Branch office

KANYA China Ltd.
32 Hongxi Road, Suzhou
Jiangsu 215151
China
Tel. +86 (0) 512 65360065
Fax +86 (0) 512 65360906
info@kanya.com.cn
www.kanya.com

Representatives

- | | | | |
|--------------|--|------------|--|
| A | Ventor Sicherheitssysteme und Automatisierung
www.ventor.at | IL | Conlog LTD
www.conlog.co.il |
| B | M.A.M. Industrie S.A.
www.mamindustrie.com | J | MIWA CO. LTD
www.miwa-inc.co.jp |
| BR | ABG Indústria e Comércio Ltda.
www.abg.ind.br | NL | TEVEL Techniek bv
www.tevel.nl |
| CZ/SK | Visimpex a.s.
www.kanya.cz | PL | TABAL Sp. J.
www.tabal.pl |
| D | August Dreckshage GmbH & Co. KG
PLZ 1, 2, 3, 4, 5
www.dreckshage.de | PL | JORDAN matcon Sp. z.o.o.
www.jordan-matcon.pl |
| D | KANYA Deutschland GmbH
PLZ 0, 35, 54–56, 6, 7, 8, 9
www.kanya-deutschland.de | RC | KANYA China Ltd.
www.kanya.com/cn |
| DK | JJ Mechatronic A/S
www.jjas.dk | RC | Chongqing Holje Precision Machinery Co. Ltd |
| F | Bernay Automation SA
www.bernay-automation.com | RO | ARDACO TEHNIC METAL
www.kanya.ro |
| GB | Thinking Space Systems LTD
www.kanya-uk.co.uk | RU | Servotechnica
www.servotechnica.ru |
| I | Meccania S.R.L.
www.meccania.com | S | EIE Maskin AB
www.eie.se |
| | | TN | HR-Engineering Sarl
www.hrengineering-tn.com |
| | | USA | A-Line Corporation
www.aline1.com |